

CHAUCER
LANE

PROPERTY LINE

**NORTH SHORE SCHOOL DISTRICT 112
EDGEWOOD MIDDLE SCHOOL SITE IMPROVEMENTS**

HIGHLAND PARK TRAFFIC COMMISSION

February 22, 2017

Nagle Hartray Architecture

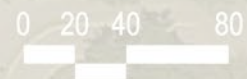
EXISTING TREE LINE

PARKING

EDGEWOOD MIDDLE SCHOOL

PARKING

EDGEWOOD ROAD



EXISTING SITE CONDITIONS





LOCATION 1 ATTRIBUTES

- Maximizes on-site car stacking
- Access drive does not divide school from play fields
- Maximizes flexibility for play field layout and use
- Minimizes potential future conflict with school building expansion



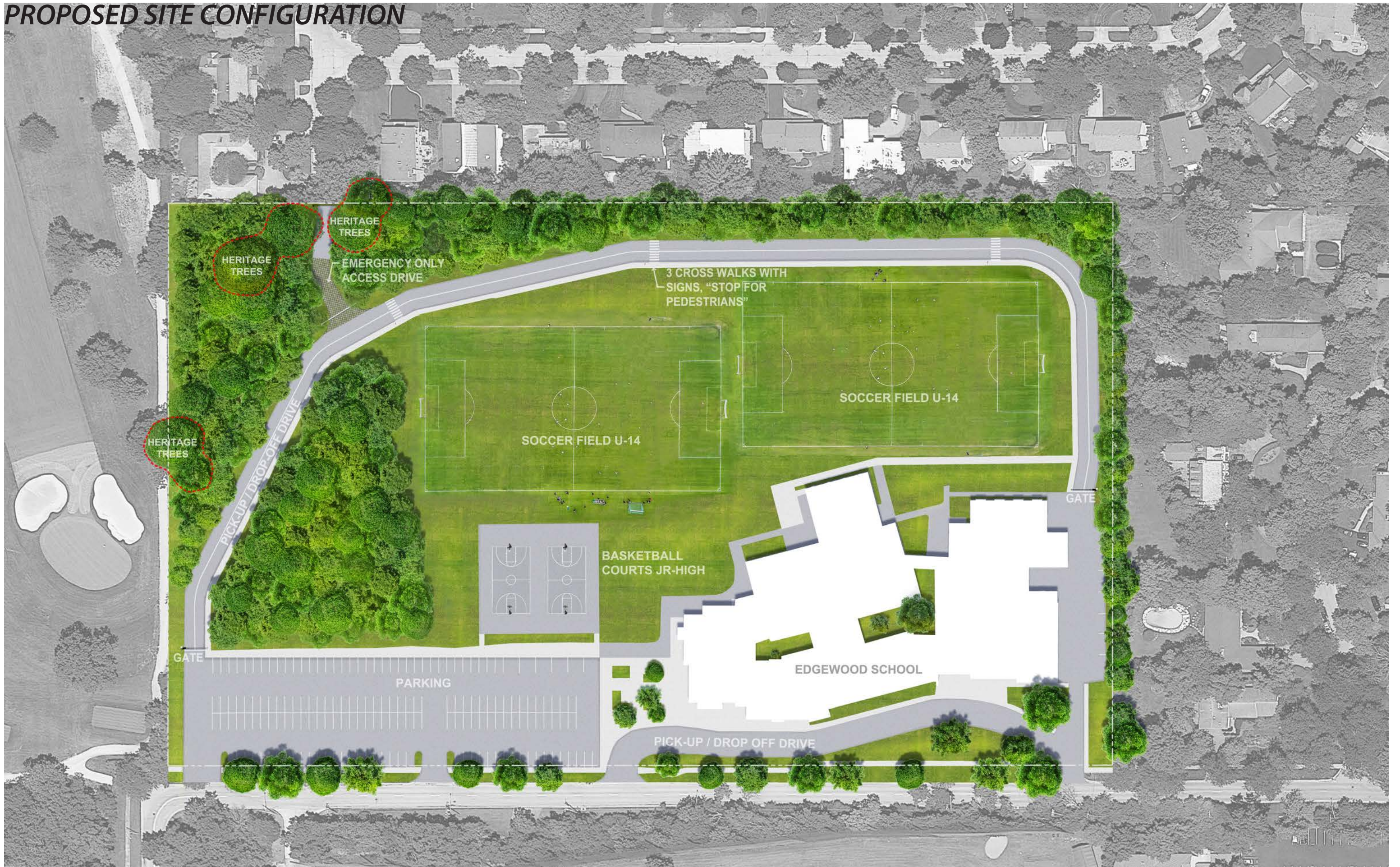
LOCATION 2 ATTRIBUTES

- Maximizes distance between access drive and adjacent residences
- Minimizes student travel between school and access drive during pick-up

PROPOSED SITE CONFIGURATION



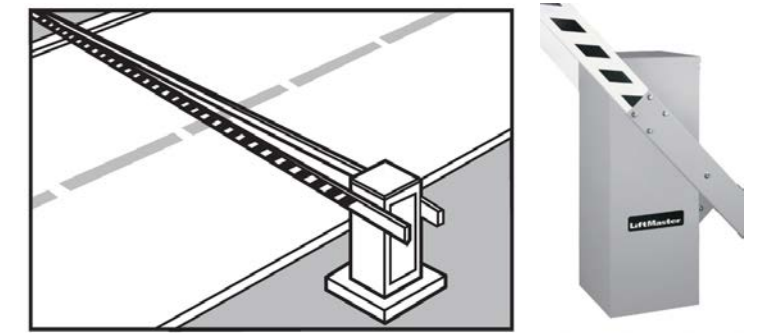
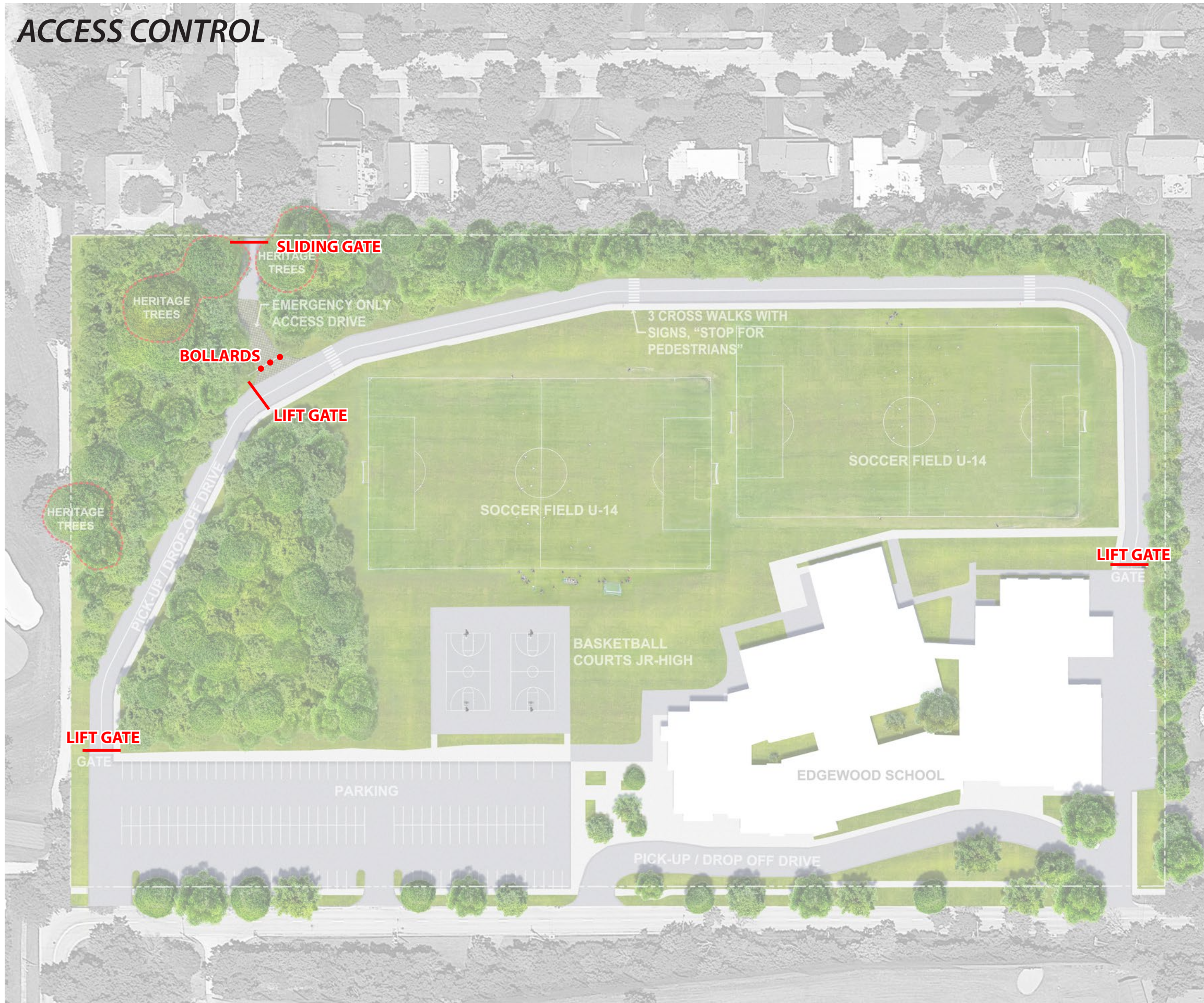
PROPOSED SITE CONFIGURATION



CRITICAL DIMENSIONS



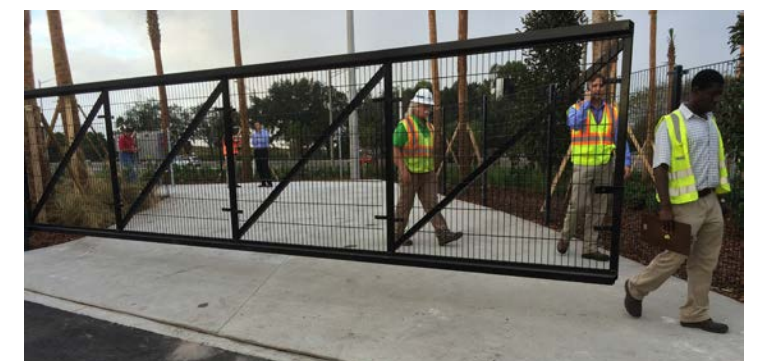
ACCESS CONTROL



LIFT GATE

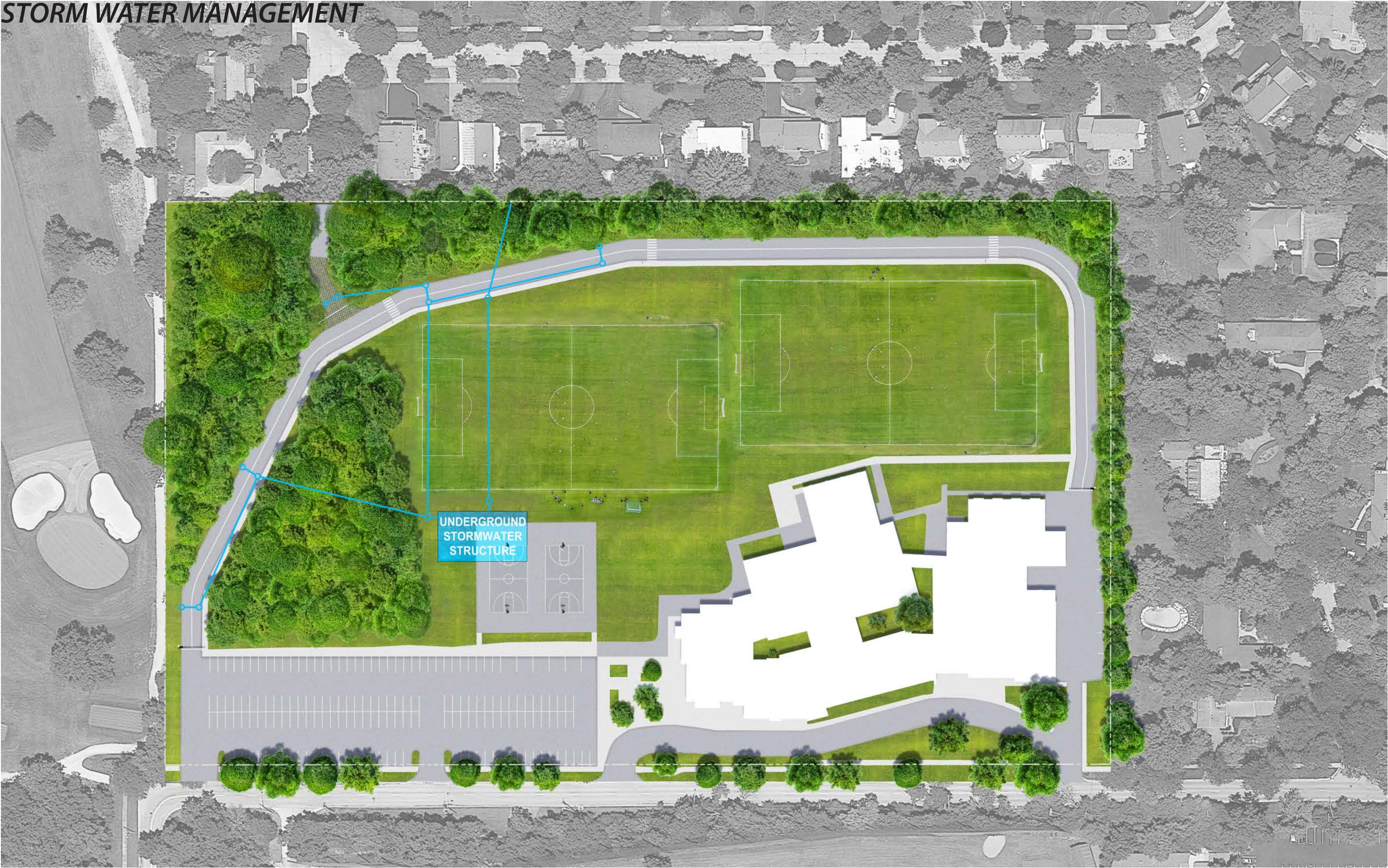


COLLAPSIBLE BOLLARDS



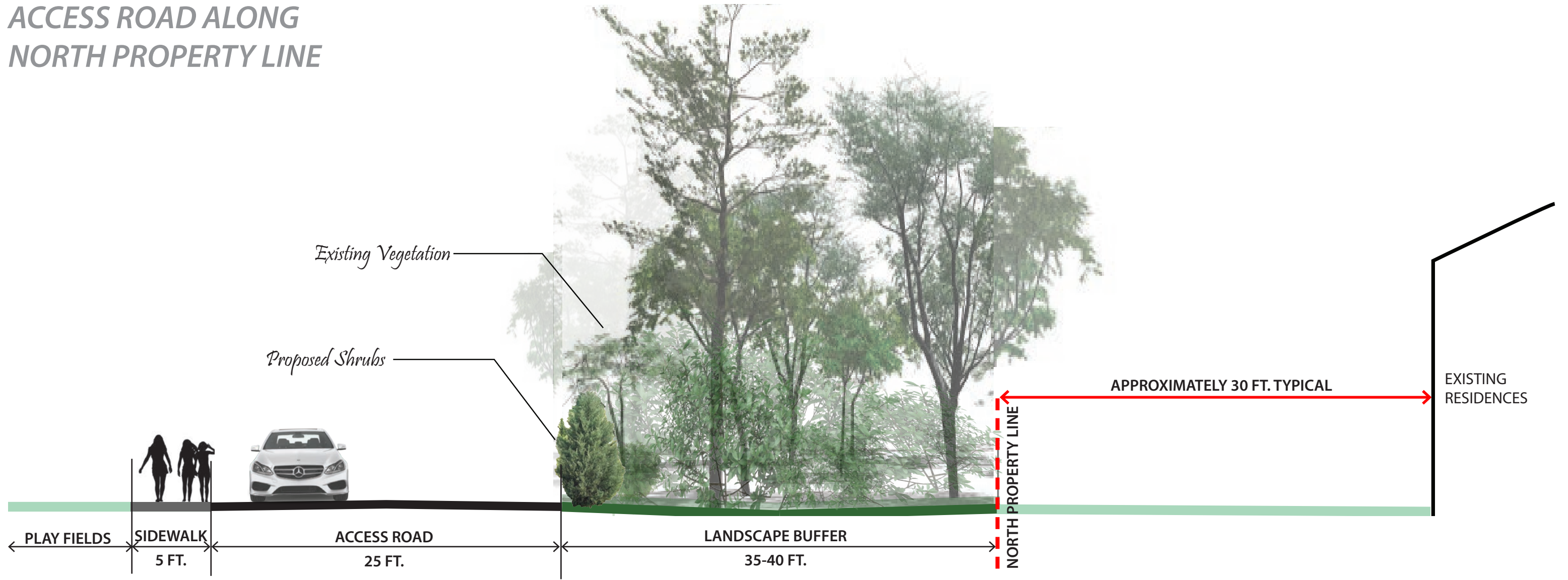
SLIDING GATE (transponder operated)

STORM WATER MANAGEMENT



UNDERGROUND
STORMWATER
STRUCTURE

ACCESS ROAD ALONG NORTH PROPERTY LINE



LANDSCAPE BUFFER ALONG PROPERTY LINE



EXISTING LANDSCAPE BUFFER ALONG NORTH PROPERTY LINE
(representative)

Emerald
Arborvitae



Spartan
Juniper



Eastern
Red Cedar



Blue Holly



Witchhazel



Swamp
White Oak



Red Maple



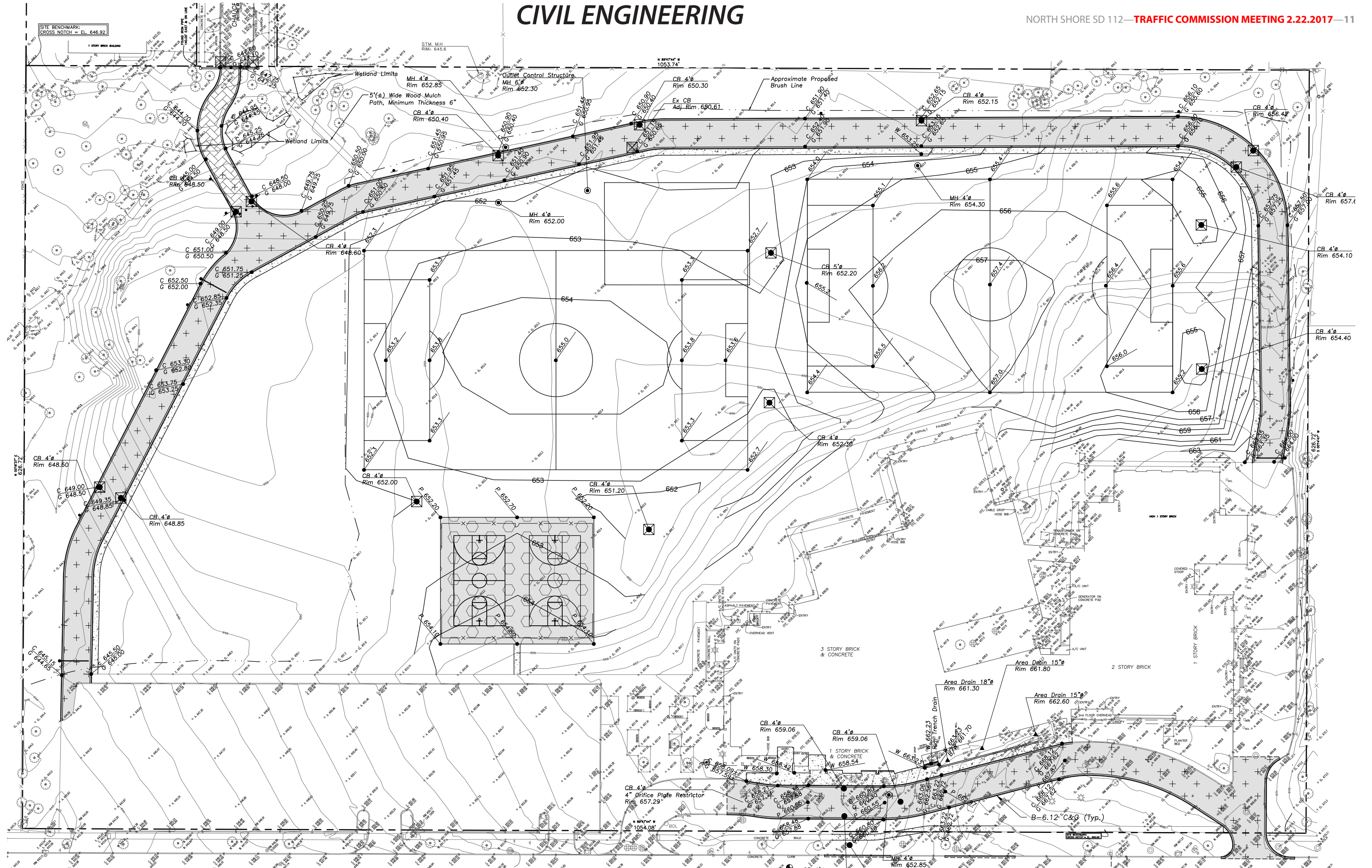
Serviceberry



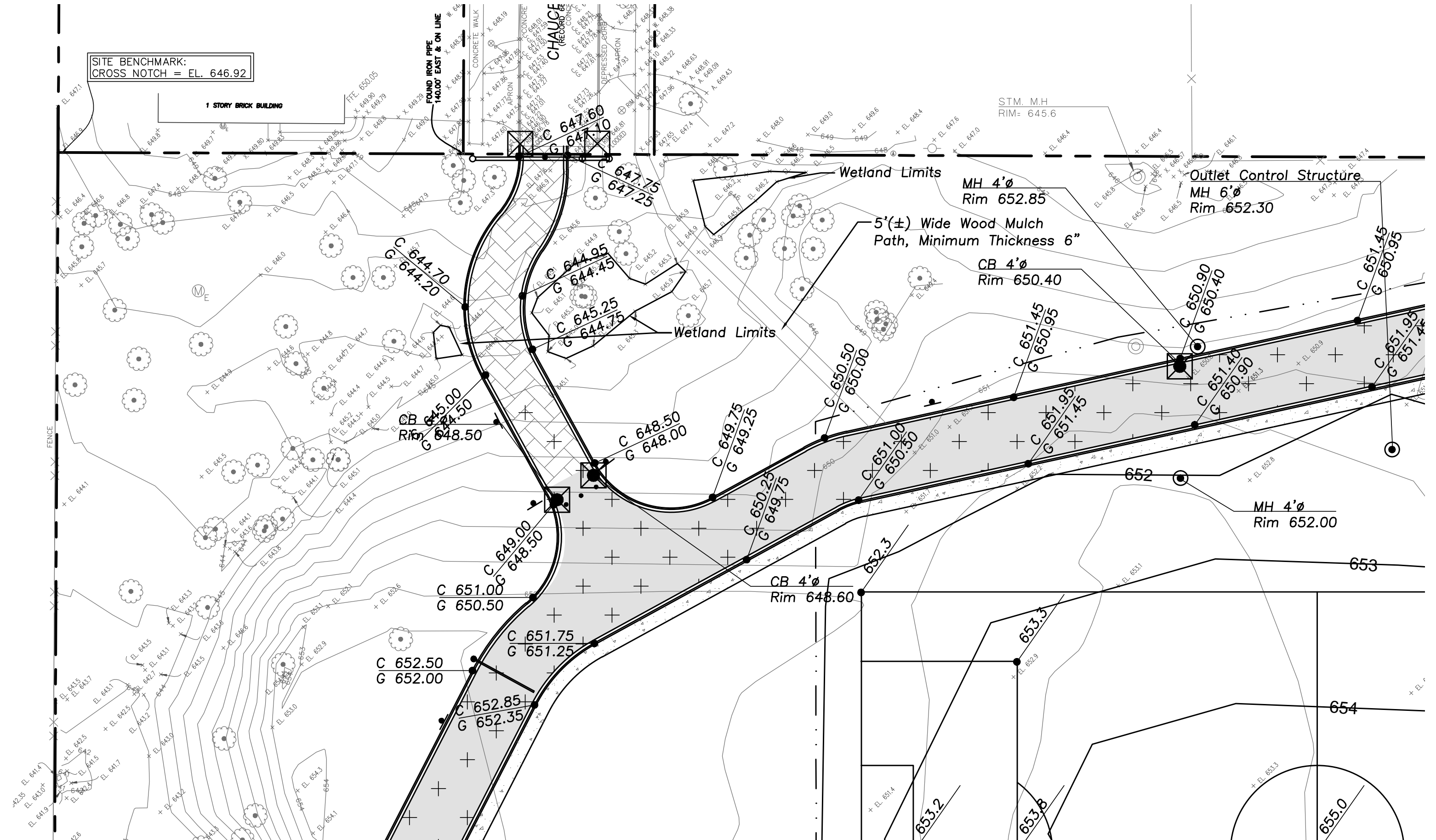
Hackberry



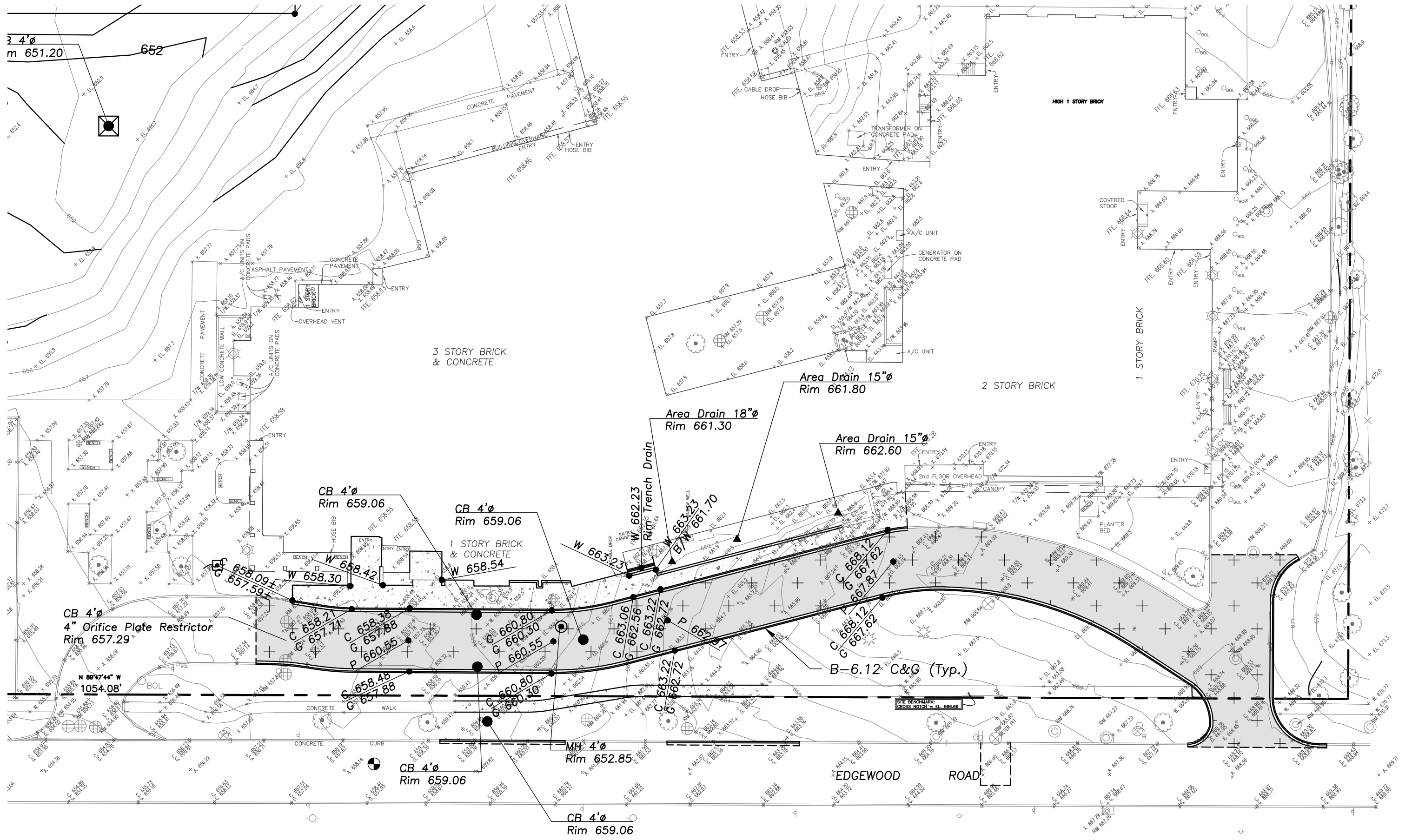
PLANTS TO BE USED TO FILL GAPS IN LANDSCAPE BUFFER



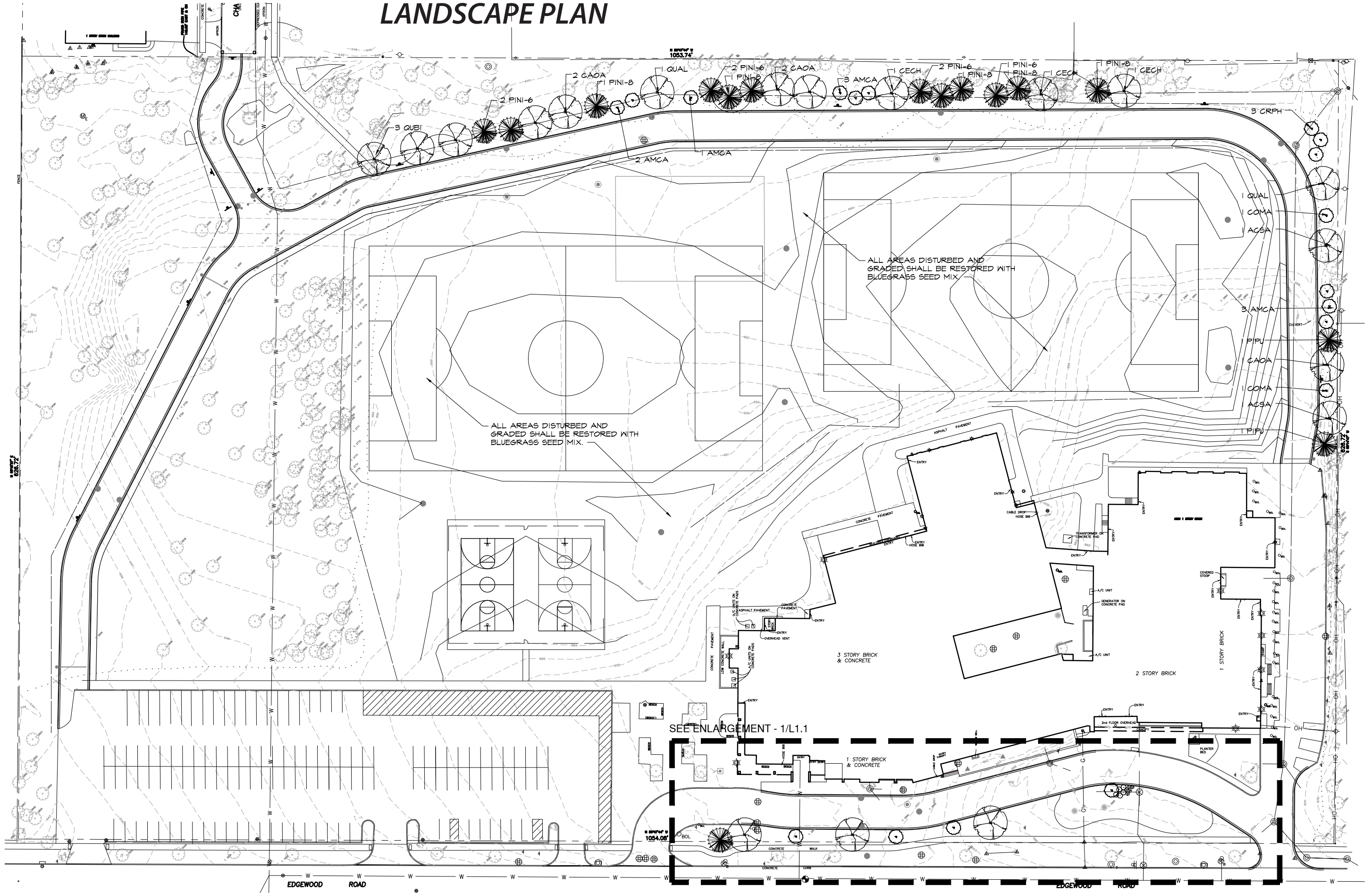
CIVIL ENGINEERING—EMERGENCY ACCESS DRIVE







CIVIL ENGINEERING—FRONT DRIVE



LANDSCAPE PLAN

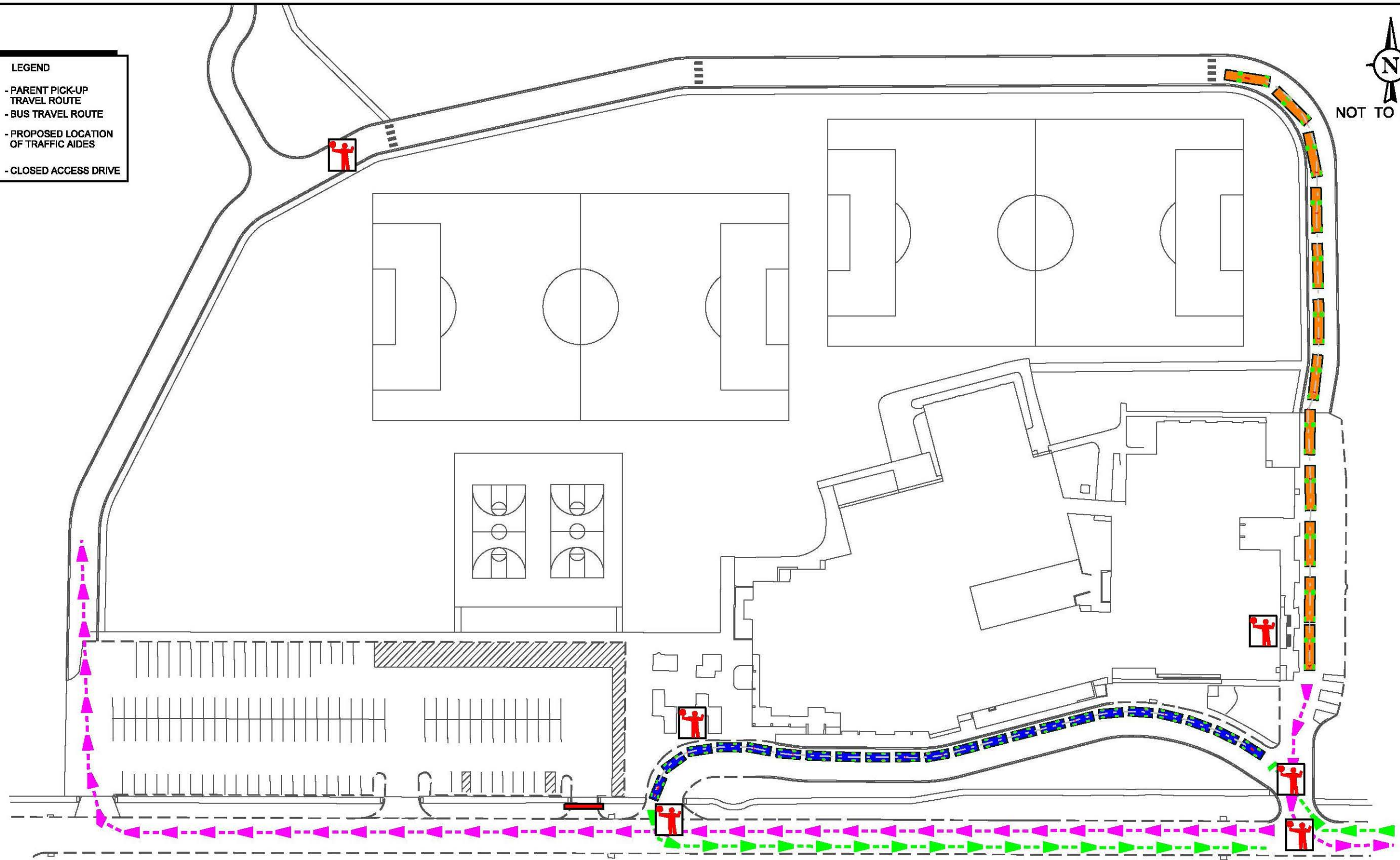


LEGEND

-  - PARENT PICK-UP TRAVEL ROUTE
-  - BUS TRAVEL ROUTE
-  - PROPOSED LOCATION OF TRAFFIC AIDES
-  - CLOSED ACCESS DRIVE



NOT TO SCALE



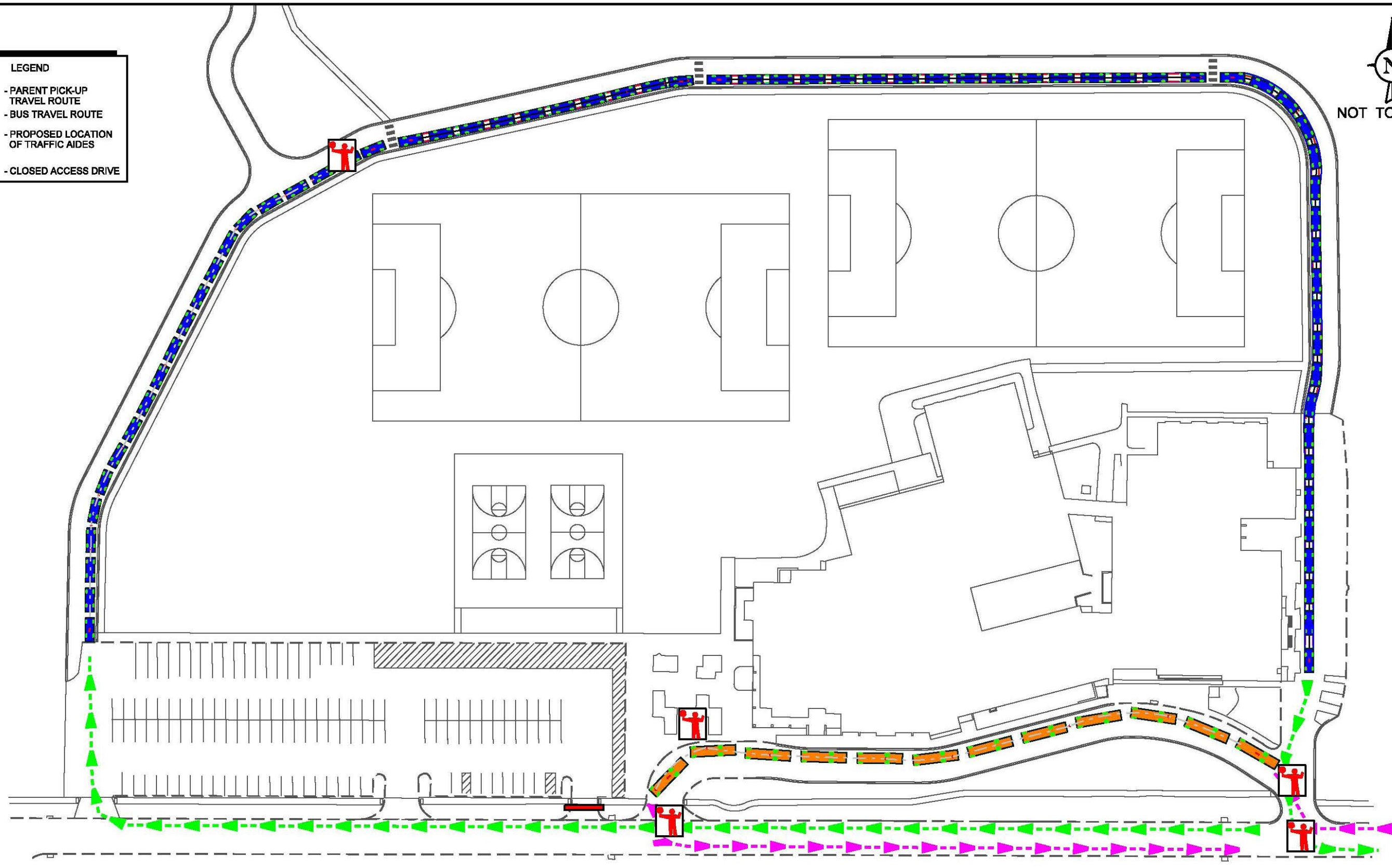
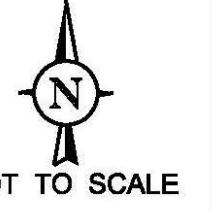
PROJECT:
Proposed Access and Circulation Enhancements
 Edgewood Middle School
 Highland Park, Illinois

TITLE:
PROPOSED MORNING DROP-OFF OPERATIONS

KLOA
 Job No: 15-057
 Figure: 8

LEGEND

- PARENT PICK-UP TRAVEL ROUTE
- BUS TRAVEL ROUTE
- PROPOSED LOCATION OF TRAFFIC AIDES
- CLOSED ACCESS DRIVE



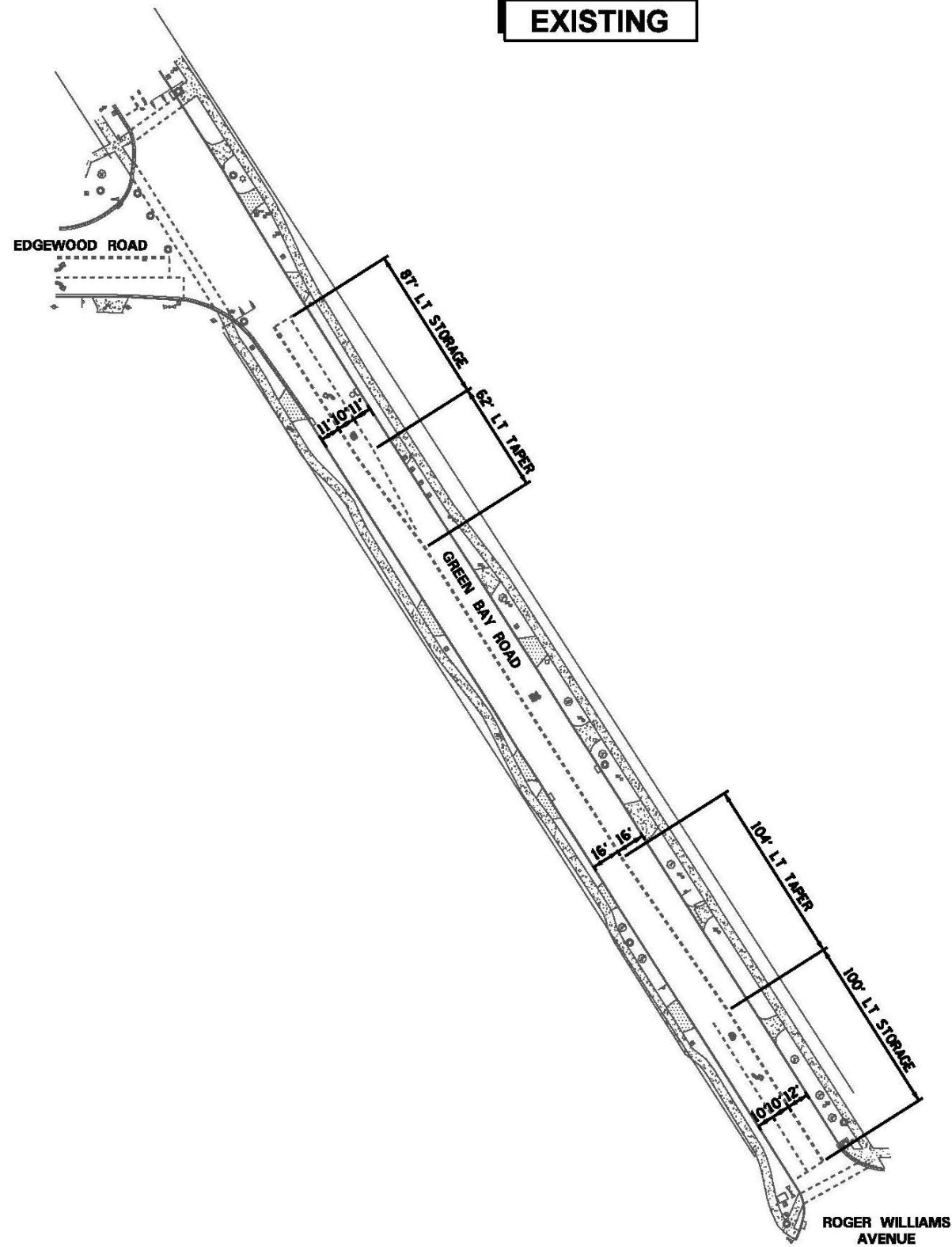
PROJECT:
Proposed Access and Circulation Enhancements
Edgewood Middle School
Highland Park, Illinois

TITLE:
PROPOSED AFTERNOON PICK-UP OPERATIONS

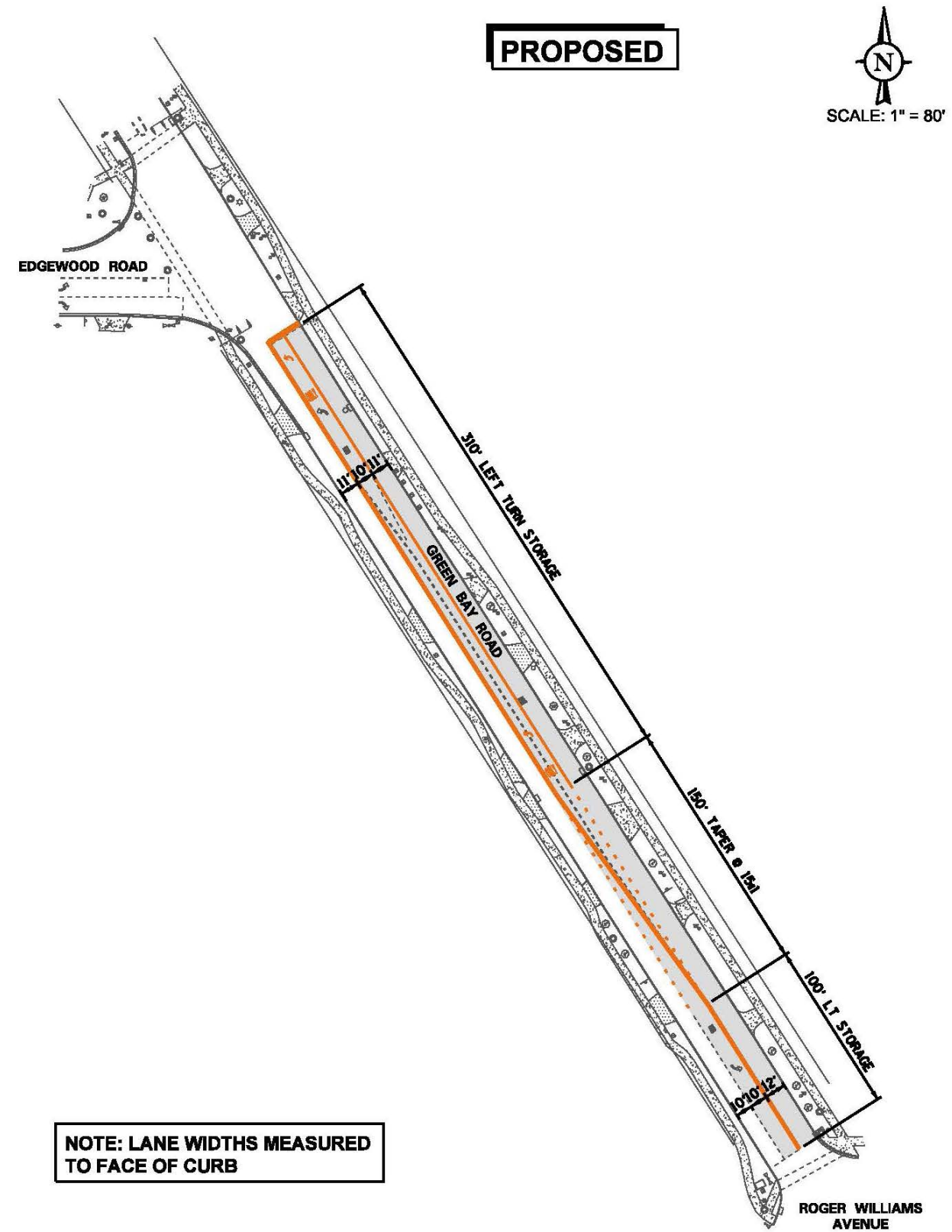


Figure: 9

EXISTING



PROPOSED



NOTE: LANE WIDTHS MEASURED TO FACE OF CURB

EDGEWOOD MIDDLE SCHOOL
PROPOSED ACCESS AND CIRCULATION MODIFICATIONS
HIGHLAND PARK, ILLINOIS
PROJECT # 16-057
FIGURE: 10

**EXISTING AND PROPOSED STRIPING
GREEN BAY ROAD BETWEEN EDGEWOOD ROAD AND ROGER WILLIAMS ROAD**



CHAUCER
LANE

PROPERTY LINE

**NORTH SHORE SD 112
EDGEWOOD MIDDLE SCHOOL SITE IMPROVEMENTS**

QUESTIONS AND ANSWERS

EXISTING TREE LINE

PARKING

EDGEWOOD MIDDLE SCHOOL

PARKING

EDGEWOOD ROAD

